

# ELASTOFLEX



**ELASTOFLEX** is a 100% acrylic, flexible, stretchable & breathable elastomeric coating designed to waterproof and decorate concrete, brick, stucco and concrete block

**ELASTOFLEX** bridges hairline cracks and will stretch and move with the expansion and contraction of the building.

- Waterproofs concrete, masonry and stucco walls against wind driven rain
- Repels water while allowing moisture vapor to pass easily out
- Bridges and waterproofs hairline cracks
- Alkali and efflorescence resistant
- UV stable
- Mildew resistant
- Easy to apply, low odor
- Above ground vertical applications
- Variety of colors available

Elastomeric Coating	May be applied by brush, roller or airless sprayer
Packaging	1G can (4/case, 108/pallet) 5G pail (36/pallet), 55G drum
Coverage per gallon	Approximate coverage is 60-100 ft <sup>2</sup> depending on texture and porosity of the surface being coated.
Application Temperature	Ambient & surface temperature must be 50°F or above and will not fall below that for 48 hours
Mixing	Stir well. Not to be thinned.
Dry Time	4 hours at 70°F, 50% RH
Recoat Time	4 hours at 70°F, 50% RH



Phone: 800-442-5535  
Fax: 978-453-2416  
[www.umaco.com](http://www.umaco.com)

**ELASTOFLEX** is a flexible, stretchable, waterborne acrylic elastomeric coating which waterproofs and decorates exterior stucco, masonry and concrete walls. Elastoflex bridges hairline cracks and will stretch and move with the expansion and contraction of the building. Elastoflex repels water while allowing moisture vapor to pass easily out. Elastoflex can also be used for pitched barrel roofs and for cracked or damaged interior walls and ceilings.

### **USES and ADVANTAGES**

- Waterproofs concrete, masonry and stucco walls against wind driven rain
- Bridges and waterproofs hairline cracks.
- Flexible, stretchable and breathable
- Easy to apply, low odor
- Available in a wide range of colors
- Easy clean-up with soap and water
- Mildew resistant

### **SURFACE PREPARATION**

For optimum performance all new masonry, concrete and stucco must age at least 28 days prior to application. Surfaces to be coated must be DRY, sound and clean. Elastoflex will not fill voids or bridge large cracks. All deteriorated mortar joints, voids and large cracks must be repointed or patched then allowed to cure. Remove all dirt, dust, spalling or loose concrete, oil, grease, wax, mildew, efflorescence, curing compounds, form release agents, paint or any other foreign material which might effect the bond. A dry removal method such as a sand or shot blasting procedure will ensure a proper surface preparation. Wet cleaning may also be used. If the size of the job does not justify the costs of such equipment, all preparations may be accomplished manually. All oil and grease must be scrubbed with a degreasing compound, rinsed thoroughly then allowed to dry. After cleaning oil or grease spots, sprinkle a little water on the cleaned surface to check for residual contamination. Oil or grease is still present if the water forms

small globules. If the water is quickly absorbed, the surface is clean. Efflorescence must be washed with a mild solution of muriatic acid and water, rinsed thoroughly then allowed to dry. Chalky masonry, concrete or stucco surfaces must first be primed with Umaco Add Mix-21.

**Always perform a spot test (of sufficient size) prior to application in order to ensure compatibility between Elastoflex and the substrate as well as to confirm that the appearance and performance are acceptable.**

### **Existing Painted Surfaces**

Elastoflex may sometimes be applied over previously painted surfaces (which are intact) only if a spot test confirms compatibility. Thoroughly clean the existing painted surface using a strong detergent, rinse thoroughly then allow to dry. Apply Elastoflex over a small area of the painted surface. If the Elastoflex lifts or wrinkles, it is not compatible and all existing paint must be removed. If the paint remains intact, wait five days and retest by cutting an "X" into the surface. Then place duct tape firmly over the "X" cut and remove with a hard, fast pulling action observing if any paint or Elastoflex adheres to the tape. If so, all existing paint must be removed before applying Elastoflex. **SEE WARNING ON BACK PAGE REGARDING PAINT REMOVAL.**

### **MIXING**

Stir or shake Elastoflex thoroughly before applying. Thinning is not recommended.

### **APPLICATION**

Cover and protect all adjacent surfaces prior to application. Apply with a 3/4" to 1" nap roller or spray equipment. Use a nylon or polyester brush for cut-ins or for working product into aesthetic details. Apply evenly avoiding runs or sags. Do not over-brush or over-roll because this will cause air bubbles to form. Always work to a wet edge. Overlapping wet on dry will cause finish

variations. For optimum performance, apply two to three roller coats or one to two coats sprayed and back-rolled (15-20 total dry mils). Surfaces may be recoated approximately 24 hours after the previous coat has been applied. Clean all brushes and equipment immediately after use with warm soapy water.

### **Recommended Spray Equipment**

**Airless Spray:**  
Minimum 28:1 Pump Ratio;  
.019" - .027" tip,  
1800-2400 psi; 1/2" high pressure material hose.

**Conventional Spray:**  
DeVilbiss MBC-510 gun; E tip;  
704 Air Cap; 3/8" ID material hose;  
double regulated pressure tank with oil and moisture separator; 20 psi fluid pressure; 40-60 psi air pressure.

### **COVERAGE**

Approximate coverage is 60 to 100 square feet per gallon. Please note that coverages will vary depending on the texture and porosity of the surface being coated.

### **LIMITATIONS**

- Do not apply in direct sunlight or when air or surface temperature are below 50°F or above 110°F.
- Do not apply in the late afternoon if condensation or fog is likely to occur, nor when rain is expected within 12 hours
- Surface temperature must be at least 5°F above the dew point
- Dampen porous surfaces if applying in direct sunlight or in extremely warm conditions
- Do not use on flat roofs or floors.
- Very high humidity will extend dry and cure time
- Protect from freezing

## WARNINGS

**WARNING!** Contains: Propylene Glycol, Crystalline Silica

**CONTAINS: Crystalline Silica** which can cause cancer. Risk of cancer depends on duration and level of exposure to dust from sanding surfaces or spray mist. Over exposure may cause lung and kidney damage.

**WARNING! This product contains a chemical known to the state of California to cause cancer**

**PRECAUTIONS:** Do not breathe vapors or spray mist. Ensure fresh air entry during application and drying. If you experience eye watering, headache or dizziness or if air monitoring demonstrates vapor/mist levels are above applicable limits, wear an appropriate, properly fitted respirator (NIOSH approved) during and after application. Follow respirator manufacturer's directions for respirator use. Avoid contact with eyes, skin or clothing. Close container after each use. Wash thoroughly after handling. If spilled, contain spilled material and remove with inert absorbent. Dispose of contaminated absorbent, container and unused contents in accordance with local, state and federal regulations.

**FIRST AID:** If swallowed, gently wipe out inside mouth to remove any residual material. Do not induce vomiting. Get medical attention immediately. If skin or eye contact occurs, flush the affected area with warm water for at least 15 minutes. Remove contact lens.

A mild soap may be used on the skin if available. If you experience difficulty in breathing, leave the area to obtain fresh air. If continued difficulty is experienced, get medical attention immediately.

Get immediate emergency MEDICAL TREATMENT if overexposed. Take MSDS or label information. For workplace use, an MSDS is available from your retailer or by calling 978-453-8881. READ SAFETY DATA SHEET (SDS) BEFORE USE.

24 Hour Emergency Medical/Spill Information (Chemtrec): 800-424-9300

## USE ONLY WITH ADEQUATE VENTILATION. KEEP OUT OF THE REACH OF CHILDREN.

**WARNING!** If you scrape, sand or remove old paint, you may release lead dust or fumes. **LEAD IS TOXIC. EXPOSURE TO LEAD DUST OR FUMES CAN CAUSE SERIOUS ILLNESS, SUCH AS BRAIN DAMAGE, ESPECIALLY IN CHILDREN. PREGNANT WOMEN SHOULD ALSO AVOID EXPOSURE.** Before you start, find out how to protect yourself and your family by contacting the USEPA National Lead Information Hotline at 1-800-424-LEAD or log on to [www.epa.gov/lead](http://www.epa.gov/lead). Wear a properly fitted NIOSH-approved respirator and prevent skin contact to control lead exposure. Clean up carefully with a HEPA vacuum and a wet mop. Follow these instructions to control exposure to other hazardous substances that may be released during surface preparation.

**For technical assistance call  
978-453-8881**

[www.umaco.com](http://www.umaco.com)

### LIMITED WARRANTY

*The manufacturer guarantees its products to be free of defects and the extent of its liability is limited to the purchase price of the materials only, if proved to be defective. Improper mixing, incorrect application or other factors beyond the control of the manufacturer or its dealers may produce unsatisfactory results and cannot be held to be the manufacturers or its dealers responsibility. There are no other guarantees either expressed or implied.*



2018

**Umaco, Inc.**  
**60 Rear Newhall Street**  
**Lowell, MA 01852**



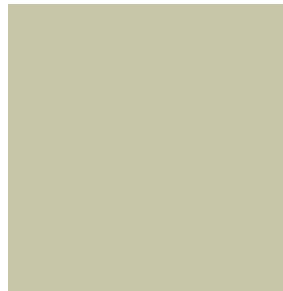
**Toll Free: 800-442-5535**  
**Phone: 978-453-8881**  
**Fax: 978-453-2416**

# ELASTOFLEX CHART

*Samples below are just a representation of the actual color. For exact color, request a draw down sample.*



DOLPHIN GRAY



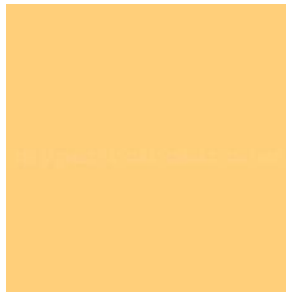
STONE GRAY



CEMENT GRAY



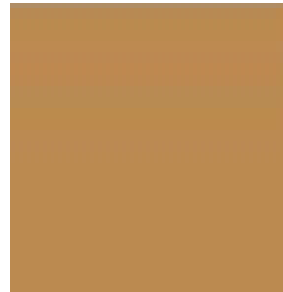
#3 GRAY



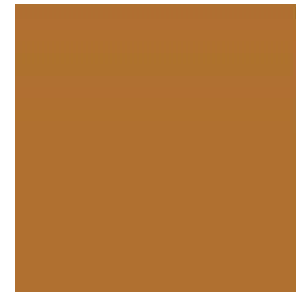
CREAM



SANDY BEIGE



BUFF GOLD



HAZETONE



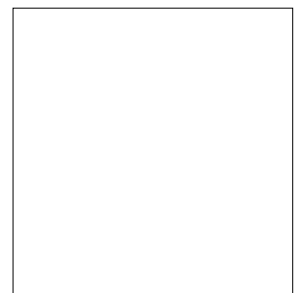
INDIAN SAND



TERRA COTTA



COBBLE



WHITE