

COLOR GRANULES

DECORATIVE GRANULES WHICH LOOK & FEEL LIKE REAL GRANITE
WHEN BROADCAST OVER A VARIETY OF RESINOUS MATERIALS

GRANITELITE™ COLOR GRANULES

consist of a proprietary blend of resin materials and natural minerals which provides a durable, long lasting, easy to maintain and aesthetically pleasing finish. GraniteLite™ Color Granules are a perfect blend of beauty and function. The textured design features a realistic granite finish which looks and feels like real granite but at a fraction of the weight and cost.

- Looks and feels like real granite
- Random in shape
- Interior & exterior applications
- Chemically compatible with a number of resin formulations
- A variety of colors available
- Anti-slip qualities
- Non-flammable
- Optimal flexibility and strength
- Colorfast and UV stable pigments
- Cost effective alternative to real granite floors and walls
- An integral part of the GraniteLite™ Textured Overlay System

RESIN SYSTEM COMPATIBILITY

GraniteLite™ Color Granules are chemically compatible with a number of resin formulations but testing should be performed prior to application in order to ensure compatibility.

- GraniteLite™ Prime•Bond•Seal
- GraniteLite™ Verical•Bond
- Epoxies
- Polyaspartics
- Polyureas
- Polyurethanes

RECOMMENDED USES

Interior

- Bathrooms
- Foyers
- Schools
- Hospitals
- Hotels
- Laboratories
- Retail spaces
- Restaurants & bars
- Garage floors
- Auto dealerships
- Basement floors

Exterior

- Pool decks
- Balconies
- Breezeways
- Patios
- Walkways
- Stairs
- Landings
- Porches
- Building entrances
- Stadiums
- Theming areas

COVERAGE RATES

For complete coverage, apply at a rate of 6 - 8 ft² per pound. GraniteLite™ Color Granules may be broadcast by hand or by using a GraniteLite™ Broadcast Gun & Hopper. Coverage rates may vary depending on application technique.

STORAGE

Store GraniteLite™ Color Granules in an air-tight polybag or container at room temperature in order to avoid moisture, humidity and product damage.

LIMITATIONS

GraniteLite™ Color Granules are random in shape to provide optimal aesthetics. The colorfast pigments used in GraniteLite™ Color Granules are UV stable however the UV stability and environmental durability of the coating system will determine outdoor suitability. Testing should be performed prior to application.

CAUTION

Read and follow product Safety Data Sheet (SDS) before using this product. 24 Hour Emergency Medical/Spill Information (Chemtrec): 1-800-424-9300

KEEP OUT OF THE REACH OF CHILDREN

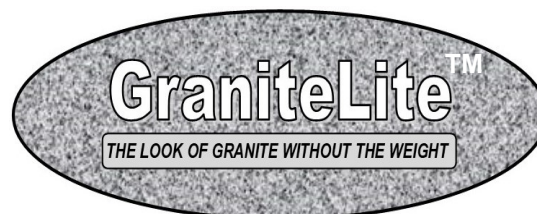
For technical assistance call 978-453-8881.

www.umaco.com

LIMITED WARRANTY

The manufacturer guarantees its products to be free of defects and the extent of its liability is limited to the purchase price of the materials only, if proved to be defective. Improper mixing, incorrect application or other factors beyond the control of the manufacturer or its dealers may produce unsatisfactory results and cannot be held to be the manufacturers or its dealers responsibility. There are no other guarantees either expressed or implied. (2021)

GraniteLite™ is a division of Umaco, Inc.

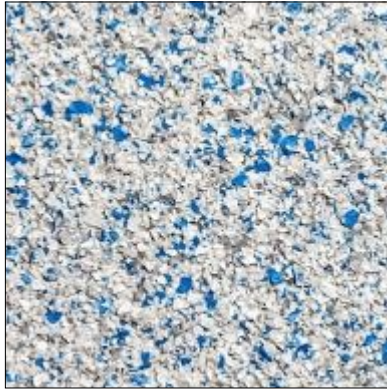


**Phone: 978-453-8881
Toll Free: 800-442-5535
www.umaco.com**

GraniteLite™ Color Granules



Crushed Marble



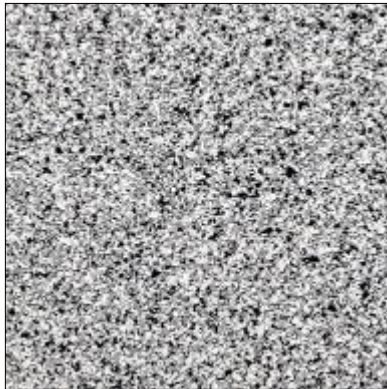
Cloudy Sky



Ocean Wave



Light Granite



Granite



Sandstone



Desert Sand



Adobe



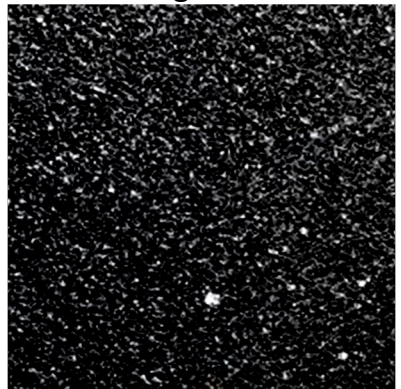
Vintage Brick



Light Green



Dark Green



Midnight

- Colors presented on this chart are just a representation of the actual color. For actual color, contact a GraniteLite™ representative to request a sample of the color(s) chosen.