

# GraniteLite™

THE LOOK OF GRANITE WITHOUT THE WEIGHT

## TEXTURED OVERLAY SYSTEM

- Looks and feels like real granite
- Cost effective
- Horizontal and vertical surfaces
- Exterior or interior use
- Rejuvenates old, worn & dull concrete
- No need for costly removal
- Durable and water-resistant
- Abrasion and chemical resistant
- Provides a slip resistant surface
- Easy to apply and maintain
- A variety of colors available
- Ideal for pool decks, walks, stairs, patios, entryways, balconies and garage floors



GraniteLite™ is a product of:



Toll Free: 800-442-5535

Phone: 978-453-8881

[www.umaco.com](http://www.umaco.com)

GraniteLite™ Textured Overlay System offers a perfect blend of beauty and function. The textured design features a realistic granite finish which looks and feels just like real granite but at a fraction of the weight and cost.

GraniteLite™ Colored Granules consist of a proprietary blend of resin materials & natural minerals which provides a durable, long lasting, easy to maintain & aesthetically pleasing granite look finish.

GraniteLite™ Textured Overlay System can be applied directly over new surfaces or directly over older surfaces (that may be worn & dull) allowing you to avoid the high costs associated with demolition & removal.





## Common uses for GraniteLite™ Textured Overlay System

### Interior

- Bathrooms
- Foyers
- Schools
- Hospitals
- Retail Spaces
- Locker Rooms
- Laboratories
- Offices
- Garage Floors
- Basements

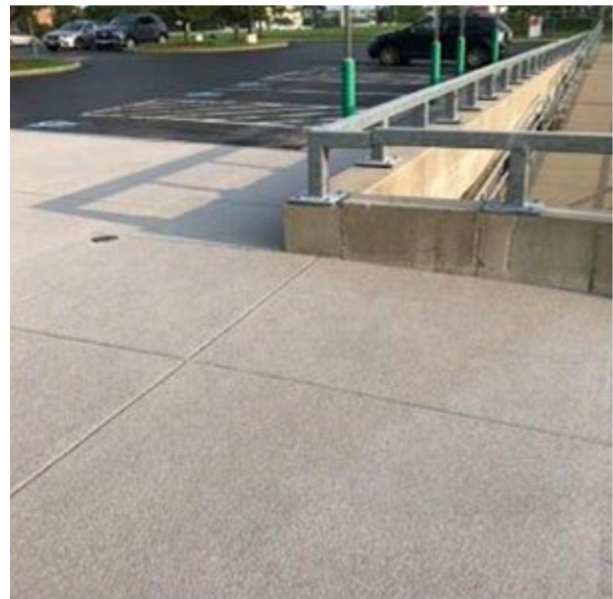
### Exterior

- Pool Decks
- Balconies
- Breeze Ways
- Patios
- Walkways
- Stairs
- Landings
- Porches
- Building Entrances
- Theming Areas

GraniteLite™ Textured Overlay System is extremely versatile which gives architects & applicators the ability to design & install a variety of aesthetically pleasing surfaces by using our standard colors or by combining colors & patterns to create any look desired.

GraniteLite™ Color Granules are available in 12 standard colors. Custom colors are also available for larger jobs. Contact a GraniteLite™ representative for more details.

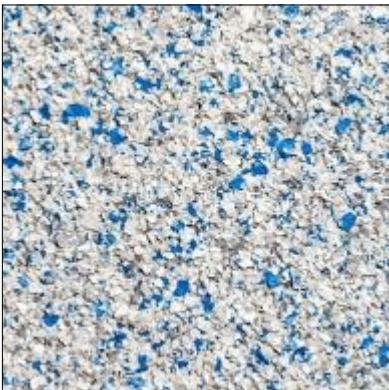
With so many colors & patterns to choose from, the only limit to creating the perfect GraniteLite™ surface is your imagination.



# GraniteLite™ Color Granules



**Crushed Marble**



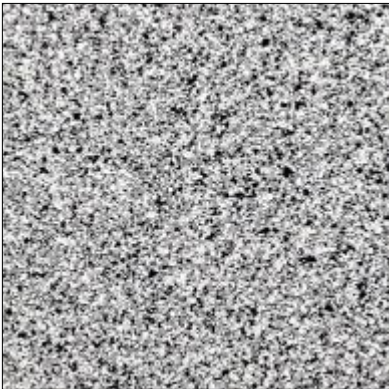
**Cloudy Sky**



**Ocean Wave**



**Light Granite**



**Granite**



**Sandstone**



**Desert Sand**



**Adobe**



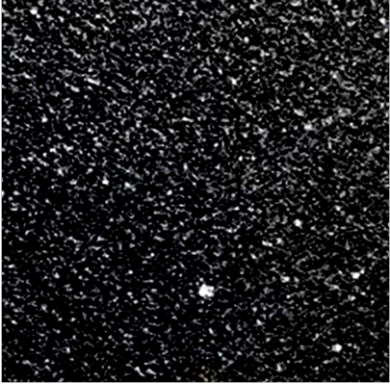
**Vintage Brick**



**Light Green**



**Dark Green**



**Midnight**

- Colors presented on this chart are just a representation of the actual color. For actual color, contact a GraniteLite™ representative to request a sample of the color(s) chosen.

GraniteLite™ Textured Overlay System may be applied over a variety of substrates including concrete, wood, ceramic tile, cement-board & sheet-rock. See [www.umaco.com](http://www.umaco.com) for specific instructions regarding each of these applications.

GraniteLite™ Textured Overlay System offers four different topcoat sealers which allows the system to be used for any type of application. Contact a GraniteLite™ representative to discuss which topcoat is right for your project.

GraniteLite™ Sure-Grip can be added to any of the four GraniteLite™ topcoat sealers when additional non-slip traction is required.



**5G pail GraniteLite™ Prime•Bond•Seal**

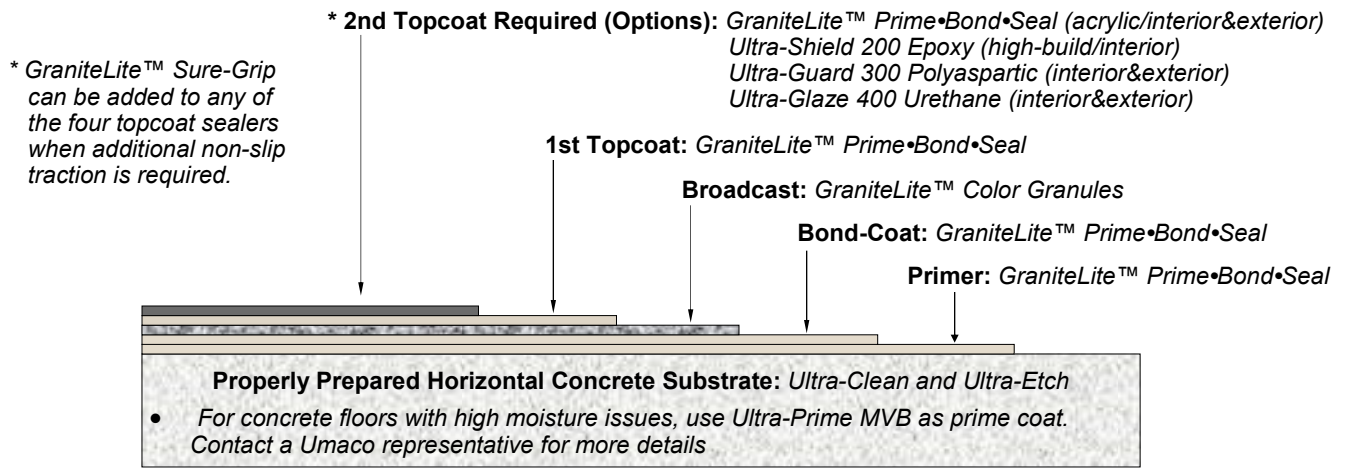
**40 pound box GraniteLite™ Color Granules**

**Covers approximately 250 square feet**

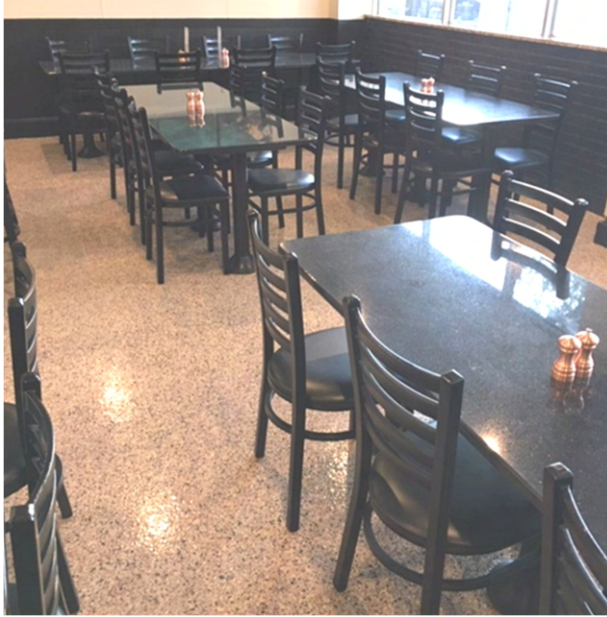


*Kit listed above includes enough material to apply:*

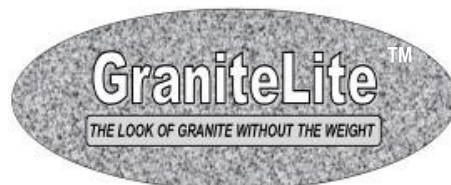
- **Prime-Coat:** GraniteLite™ Prime•Bond•Seal
- **Bond-Coat:** GraniteLite™ Prime•Bond•Seal
- **Broadcast:** GraniteLite™ Color Granules
- **1st Topcoat:** GraniteLite™ Prime•Bond•Seal
- **2nd Topcoat:** GraniteLite™ Prime•Bond•Seal



Horizontal GraniteLite™ Textured Overlay System	Coverage
Primer: GraniteLite™ Prime•Bond•Seal	200 ft <sup>2</sup> /gallon
Bond-Coat: GraniteLite™ Prime•Bond•Seal	200 ft <sup>2</sup> /gallon
Broadcast: GraniteLite™ Color Granules	6-8 ft <sup>2</sup> /pound
1st Topcoat: GraniteLite™ Prime•Bond•Seal	200 ft <sup>2</sup> /gallon
2nd Topcoat Required: See options listed below	.....
Vertical GraniteLite™ Textured Overlay System	Coverage
Primer: GraniteLite™ Vertical-Bond	200 ft <sup>2</sup> /gallon
Bond-Coat: GraniteLite™ Vertical-Bond	200 ft <sup>2</sup> /gallon
Broadcast: GraniteLite™ Color Granules	6-8 ft <sup>2</sup> /pound
1st Topcoat: GraniteLite™ Prime•Bond•Seal	200 ft <sup>2</sup> /gallon
2nd Topcoat Required: See options listed below	.....
2nd Topcoat Options (Required)	Coverage
<b>GraniteLite™ Prime•Bond•Seal</b> is a single component, <b>interior/exterior</b> , UV stable, waterborne sealer. Ideal for light foot traffic, non-vehicular traffic & normal wear/tear.	200 ft <sup>2</sup> /gallon
<b>Ultra-Shield 200 Epoxy</b> is a two-component, 100% solids, <b>interior</b> , clear epoxy used when a high build coating is required. Ideal for heavy foot traffic, fork lift traffic and chemical attack.	200 ft <sup>2</sup> /gallon
<b>Ultra-Guard 300 Polyaspartic</b> is a two-component, <b>interior/exterior</b> , clear, extremely UV stable, heat-reflective, abrasion, chemical & stain resistant topcoat. Ideal for heavy foot traffic, vehicular traffic & chemical attack.	200 ft <sup>2</sup> /gallon
<b>Ultra-Glaze 400 Urethane</b> is a two-component, water-based, <b>interior/exterior</b> , clear, extremely UV stable, abrasion, chemical & stain resistant topcoat. Ideal for heavy foot traffic, vehicular traffic & chemical attack.	200 ft <sup>2</sup> /gallon
Moisture Barrier	Coverage
<b>Ultra-Prime MVB</b> is a two component, 100% solids, low odor, low viscosity epoxy that is formulated as a moisture barrier coating to treat new and existing concrete floors with high moisture and high pH.	100 ft <sup>2</sup> /gallon
Surface Preparation, Non-Slip Additive & Maintenance	Coverage
<b>Cleaner:</b> Ultra-Clean (Cleaner & Degreaser)	300 ft <sup>2</sup> /gallon
<b>Etcher:</b> Ultra-Etch (Concrete Etcher)	200 ft <sup>2</sup> /gallon
<b>Non-Slip Additive:</b> GraniteLite™ Sure-Grip Fine & Coarse	3-5 oz/gallon



GraniteLite™ Textured Overlay System is easy to keep clean and maintain by using Ultra-Clean (cleaner & degreaser) as part of your normal maintenance routine.



60 Rear Newhall Street  
Lowell, MA 01852  
Toll Free: 800-442-5535  
Phone: 978-453-8881  
[www.umaco.com](http://www.umaco.com)

