

# PAVER-SAVER PLUS

A COLORED, PENETRATING, CONCRETE STAIN & REPELLENT TO BE MIXED WITH PAVER-SAVER WHICH IS FORMULATED USING NANO-TECHNOLOGY

**PLEASE NOTE: PAVER-SAVER PLUS (12 OZ) MUST BE MIXED WITH A 1G BOTTLE OF PAVER-SAVER (CLEAR).**

Paver-Saver Plus rejuvenates & decorates faded concrete, concrete pavers, retaining wall block, stucco, brick & natural stone. It can also be used to decorate & protect new concrete surfaces. Paver-Saver Plus is a semi-transparent, penetrating, concrete stain & protective repellent which provides an attractive yet natural looking finish when applied over horizontal & vertical concrete surfaces. Paver-Saver Plus which is formulated using nano-technology, is a proprietary blend of the highest quality pigments & an advanced aliphatic polyurethane. Paver-Saver Plus is water-based making it a safe & effective alternative to acid & solvent based stains. Paver-Saver Plus mechanically & chemically bonds to wide variety of mineral substrates including, but not limited to, concrete pavers, concrete slabs, stucco, natural stone, clay tile & brick.

### USES

- Concrete pavers & concrete slabs
- Retaining wall block & split-face block
- Stucco, brick & natural stone
- Patios, walkways & entrances
- Pool decks
- Balconies
- Driveways

### ADVANTAGES

- Stains and protects in one easy step
- Advanced nano technology
- Available in a wide variety of colors
- Water, oil and stain repellent
- Excellent beading properties
- Single component, user friendly
- Low VOC
- UV stable
- Breathable

### PACKAGING

12 oz bottle (6/case)

### SURFACE PREPARATION

Concrete surfaces must be cured (30 days), sound, clean, dry and untreated with previous coatings. Remove all dirt, dust, spalling or loose concrete, oil, grease, wax, mildew, efflorescence, laitance, curing compounds, form release agents, rust, paint or any other foreign material which might effect the bond. **SEE WARNING REGARDING PAINT REMOVAL.** Umaco Ultra-Clean may be used to remove oil or grease stains from concrete surfaces and may also be used as an all purpose cleaner for surface preparation. Using a scrub brush, work Ultra-Clean into the concrete and let stand for 5 minutes. Then rinse completely with water and allow to dry. Repeat if necessary. Neutralizing not required

### Etching

A rough profile is recommended for proper adhesion which may be obtained by lightly etching the concrete using Umaco Ultra-Etch. Apply generously at full strength then let it work into the concrete for 10 minutes. Rinse thoroughly with water and allow to dry. Neutralizing not required. Ultimately, a porous surface is required for the material to bond properly. Test by sprinkling some water on the surface. If the water is quickly absorbed, the surface is ready. If the water beads up, further preparation is required. Contact a Umaco representative for more information regarding proper surface preparation.

### MIXING

**PLEASE NOTE: PAVER-SAVER PLUS (12 OZ) MUST BE MIXED WITH A 1G BOTTLE OF PAVER-SAVER (CLEAR).**

Shake the 12 oz bottle of Paver-Saver Plus vigorously making sure to loosen any pigment which may have settled on bottom. Then add the 12 oz bottle of Paver-Saver Plus into a 1G bottle of

Paver-Saver (Clear). Lightly shake the 1G bottle until all the pigment is blended and a uniform color is achieved. If any residue remains in the 12 oz bottle (Paver-Saver Plus), carefully pour some of the blended material back into the 12 oz bottle (filling it half way) then shake vigorously making sure to loosen any pigment. Then pour back into the 1G bottle of blended material. Repeat if necessary. Prior to and continuously during use, lightly shake the blended material in the 1G bottle making sure to loosen and blend any pigment which may settle on the bottom.

### APPLICATION

To achieve a natural variegate appearance, Paver-Saver Plus should be applied by creating a mist via an airless sprayer, High Volume Low Pressure (HVLP) sprayer, production gun, pump sprayer or trigger spray bottle. The variegation is the result of the specific gravities of the pigments as well as the absorption rate of the application surface. Roller application methods force absorption resulting in mechanical lines.

### Brush/Sea Sponge Application

For application areas where coverage and product control is warranted, apply Paver-Saver Plus with a sea sponge or traditional bristle brush (corners and walls). Using this method of application may result in the appearance of mechanical lines.

### Secondary/Highlight Color

To achieve increase color depth or mottled appearance, a secondary or highlight coat can be applied as soon as the initial Paver-Saver Plus color is dry to the touch (approximately 30 minutes). All Paver-Saver Plus colors are compatible thus can be mixed, sprayed simultaneously and layered to achieve the desired appearance.



Phone: 978-453-8881  
Toll Free: 800-442-5535  
Fax: 978-453-2416  
www.umaco.com

### **COVERAGE**

Approximate coverage is 200-300 ft<sup>2</sup> per gallon. Coverage rates will vary depending on surface roughness and porosity.

### **CLEANUP**

While still wet, clean up equipment with soap and water.

### **DISPOSAL**

Dispose of empty packaging and other waste in accordance with federal, state, provinces and local regulations

### **STORAGE**

Paver-Saver Plus has a shelf life of one (1) year from date of manufacture in original, factory-sealed containers when stored indoors at a temperature between 60-90°F (15-32°C).

### **LIMITATIONS**

- Do not apply on wet or damp substrate
- Do not apply when substrate has direct sun (high noon)
- Apply when ambient and surface temperatures are between 50°F-95°F
- Substrate temperature must be 5° F above dew point
- New concrete must cure 30 days
- Do not apply over non-porous, smooth troweled or previously coated substrates unless the surface is properly prepared
- Paver-Saver Plus (12 oz bottle ) must be mixed with a 1G bottle of Paver-Saver (Clear)

### **WARNING**

Harmful if inhaled. Harmful if swallowed. May cause eye irritation. May cause allergic skin reaction. Before using, read the Safety Data Sheet and follow all precautions to prevent bodily harm.

**WARNING!** If you scrape, sand or remove old paint, you may release lead dust or fumes. **LEAD IS TOXIC. EXPOSURE TO LEAD DUST OR FUMES CAN CAUSE SERIOUS ILLNESS, SUCH AS BRAIN DAMAGE, ESPECIALLY IN CHILDREN. PREGNANT WOMEN SHOULD ALSO AVOID EXPOSURE.**

Before you start, find out how to protect yourself and your family by contacting the USEPA National Lead Information Hotline at 1-800-424-LEAD or log onto [www.epa.gov/lead](http://www.epa.gov/lead). Wear a properly fitted respirator and prevent skin contact to control lead exposure. Clean up carefully with a HEPA vacuum and a wet mop. Follow these instructions to control exposure to other hazardous substances that may be released during surface preparation.

**For technical assistance call 978-453-8881.**

[www.umaco.com](http://www.umaco.com)

### **LIMITED WARRANTY**

*The manufacturer guarantees its products to be free of defects and the extent of its liability is limited to the purchase price of the materials only, if proved to be defective. Improper mixing, incorrect application or other factors beyond the control of the manufacturer or its dealers may produce unsatisfactory results and cannot be held to be the manufacturers or its dealers responsibility. There are no other guarantees either expressed or implied. (2022)*

**Umaco, Inc.**  
**60 Rear Newhall Street**  
**Lowell, MA 01852**



**Toll Free: 800-442-5535**  
**Phone: 978-453-8881**  
**Fax: 978-453-2416**

# Umaco Paver-Saver Plus Color Chart



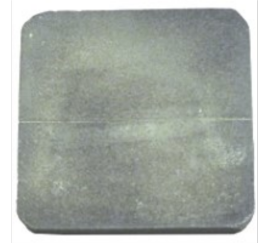
**White**



**Natural**



**Antique Gray**



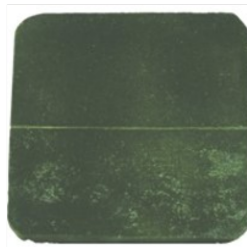
**Gray**



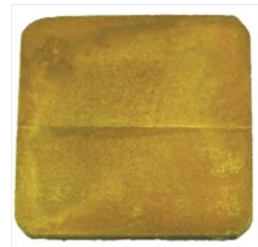
**Black**



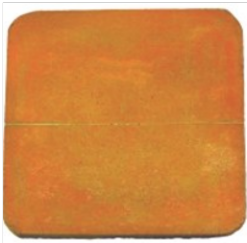
**Patina**



**Olive Green**



**Sandstone**



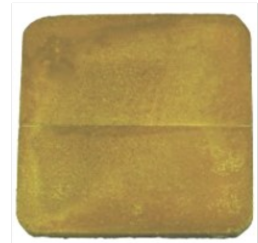
**Pottery**



**Terra Cotta**



**Mars Red**



**Light Adobe**



**Dark Adobe**



**Dark Brown**



**Dark Chocolate**



**Desert Sand**

- *Colors presented on the color chart above are just a representation of the actual color. For an exact color, request to see an actual color swatch.*