

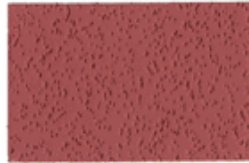
# RAINBOW CEMENT COLORS

UNIVERSAL PIGMENTS USED TO TINT ANY TYPE OF CEMENT OR GYPSUM PRODUCT INCLUDING A VARIETY OF UMACO PRODUCTS

TO ACHIEVE COLORS BELOW, MIX A ONE POUND BOX OF THE CHOSEN COLOR WITH ANY 50# BAG OF A UMACO PRODUCT (GRAY IN COLOR).



LIMEPROOF YELLOW



LIMEPROOF RED



PRINCESS METALLIC



GOLDENROD



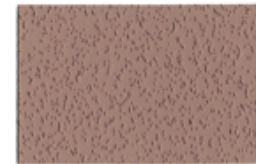
LIMEPROOF GREEN



LIMEPROOF BROWN



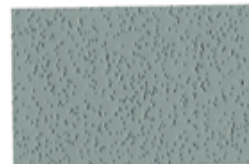
YELLOW OCHRE



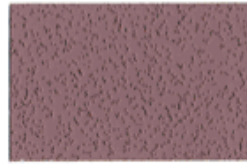
VENETIAN RED



LIMEPROOF BLACK



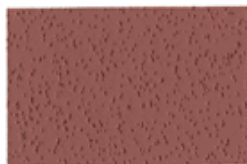
CEMENT BLUE



INDIAN RED



BROWNSTONE



CEMENT RED



DEEP CEMENT BROWN



VAN DYKE BROWN



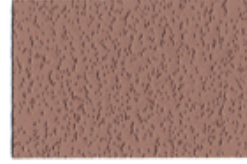
GERMANTOWN LAMP  
BLACK



DEEP CEMENT BUFF



BRIGHT RED



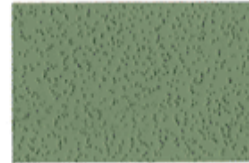
BURNT SIENNA



RAW SIENNA



TERRA COTTA



BRIGHT GREEN



BURNT UMBER



RAW UMBER

*Please note that color samples above may differ from actual product. Variations in color due to job conditions and method of application should also be expected. Always do a sample panel on site to ensure color and texture approval by owner or architect.*

**RAINBOW CEMENT COLORS** are universal pigments (powder form) which can be used to tint any type of cement or gypsum based product including cement based Umaco Products. They are completely compatible with one another for mixing so that an endless variety of shades can be achieved. All 25 Rainbow Cement Colors are metal oxides and natural earth pigments and meet the standards established by ASTM C-979 "Pigments for Integrally Colored Concrete".

### **USES AND ADVANTAGES**

- Tinting any type of cement or gypsum based product.
- Tints cement based Umaco Products - one pound box per each 50# bag (gray in color).
- Comparatively fast to sunlight.
- Resistance to alkalis and weak acids.
- Weather resistant.
- Uniform, will not deteriorate in storage.
- Non-reactive, free from soluble salts and acids.
- Easily dispersed in water, insoluble in water.

### **MIXING**

#### **Concrete or Gypsum**

If mixing is done by hand, place the sand in the bottom of the mixing box, spread the cement over it and sprinkle the predetermined amount of pigment over the cement. The whole batch should be thoroughly mixed dry until the entire batch is of uniform color and free of streaks. Water should then be added to bring the mixture to the proper consistency and the whole batch wet mixed. Do not use more water than is necessary as a wet mix is difficult to handle and weakens the concrete. On large jobs, it is often economical to mix mechanically rather than manually. When using a mixer, the

same care must be taken in weighing all ingredients and in thoroughly dry mixing to a uniform color before adding water.

#### **Umaco Products**

Place the specific Umaco product in a mixing box or mixer, then sprinkle the predetermined amount of pigment over it. The whole batch should be thoroughly mixed dry until the entire batch is uniform and free of streaks. Then follow the specific product's mixing instructions as noted on bag or product data sheet.

### **PLACEMENT**

After mixing, place and finish as you ordinarily would. Do the finish troweling only after the moisture has disappeared from the surface.

### **CURING**

Cure as you ordinarily would. It is generally beneficial to cover the surface with burlap and keep moist after the surface has set enough to withstand weight. Keep moist until fully set.

### **COVERAGE**

#### **Concrete**

Generally five pounds of color per 94 pound bag of Portland cement. However, lighter pastel shades can be obtained using 1 to 3 pounds of color, while deeper shades may require 7 to 8 pounds of color. Never use more than 10 pounds of color per bag of cement. For ready mixed concrete, 25 pounds of color per cubic yard is recommended. In general, for cleaner brighter colors the use of white Portland cement is recommended.

#### **Umaco Products**

Generally one pound of color per each 50 pound bag of the specific cement based Umaco product (gray in color) being used.

### **PACKAGING**

Available in 1 pound boxes with sealed plastic bags (12 per carton), 5 pound boxes with sealed plastic bags (6 per carton) and 25 pound and 50 pound multiwall paper bags with moisture barrier.

### **LIMITATIONS**

Colors have no effect on efflorescence but make it more noticeable especially on deeper colors just as it shows more with gray cement than it does with white cement. To reduce efflorescence, use clean, soft water and clean washed aggregate. Tamp concrete well to ensure consolidation.

### **CAUTION**

All colors are non-toxic. Avoid breathing dust and wash hands and skin thoroughly after handling. For specific handling precautions and first aid procedures refer to MSDS for particular color you are using.

**KEEP OUT OF REACH OF CHILDREN.**

### **WARRANTY**

The shades of color from color card are approximate based on the mixing ratios shown. Variations may be expected due to differences in local cement and aggregates and method of application. For a truer color representation a test with the actual raw materials to be used is recommended. No warranties are made as to color obtained.

Distributed by:  
Umaco, Inc.

60 Rear Newhall Street  
Lowell, MA. 01852  
Phone: 978-453-8881  
[www.umaco.com](http://www.umaco.com)

- Concrete Patching and Repair Products
- Masonry Waterproofing Products
- Acrylic Admixtures and Bonding Agents



- Decorative Masonry and Concrete Coatings
- Traditional and Synthetic Stucco Systems
- Flooring Underlayments and Resurfacers