

RESINOUS FLOOR COATINGS

HIGH-PERFORMANCE • SEAMLESS • AFFORDABLE



- Epoxy Coatings
- Urethane Coatings
- Concrete Polishing
- Decorative Flooring
- Concrete Stains

MADE IN

U. S. A.

"The Professional's Choice"

UMACO
INC.

Toll Free: 800-442-5535
Phone: 978-453-8881
www.umaco.com

Umaco offers a wide range of high-performance epoxy and urethane-based floor coating products and concrete repair systems for commercial, institutional, industrial and residential floors. Solid colors as well as a wide variety of decorative options are available.

Our high-performance seamless floor systems deliver superior chemical, stain and wear resistance which will increase your floor's longevity and make your floors more attractive and easier to maintain.

Umaco seamless floor systems are extremely versatile which gives architects and applicators the ability to design and install a variety of durable yet aesthetically pleasing surfaces. With so many colors and decorative options to choose from, the only limit to creating the perfect flooring system is your imagination.



**CHEMICAL
& STAIN
RESISTANT**





**HIGH
PERFORMANCE
FLOORING
SYSTEMS**



Our high performance coatings along with our unmatched customer service and technical support will help ensure that your flooring project gives you superior results at a competitive price.

From decorative, high-traffic entrances to heavy industrial manufacturing facilities and warehouses, we'll recommend the right combination of products to ensure functionality and durability.

Use this guide along with assistance from a Umaco representative to design the right system for your specific application. Please refer to technical data sheets regarding proper surface preparation, substrate considerations and other application information.

SHOP FLOOR SYSTEM

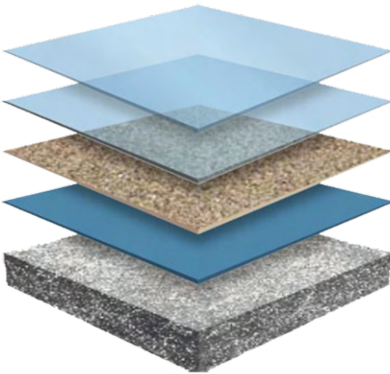
An economical system with just two coats for easy application. This durable and easy to clean epoxy solution provides moderate chemical and abrasion resistance with a high gloss for that professional look. An optional polyaspartic or urethane topcoat ensures excellent wear characteristics with stain and chemical resistance.

Advantages

- Self-leveling
- Seamless high-build topcoat
- Low odor, low VOC
- Excellent adhesion & penetration
- Chemical and abrasion resistant
- Meets FDA requirements

Typical Uses

- Automotive
- Warehouses
- Manufacturing
- Mechanical rooms
- Educational
- Retail



2nd Topcoat (Optional): *Ultra-Guard 300 (clear polyaspartic)*
Ultra-Glaze 400 (clear urethane)

Topcoat: *Ultra-Shield 250 (colored epoxy)*

Broadcast: *Quartz to rejection*

Basecoat: *Ultra-Shield 250 (colored epoxy)*

Properly Prepared Concrete: *Ultra-Clean, Ultra-Etch & Ultra-Prime 100*

Note: *For concrete floors with high moisture issues, use Ultra-Prime MVB as prime coat. Contact a Umaco representative for more details regarding proper surface preparation.*

HIGH-BUILD FLOOR SYSTEM

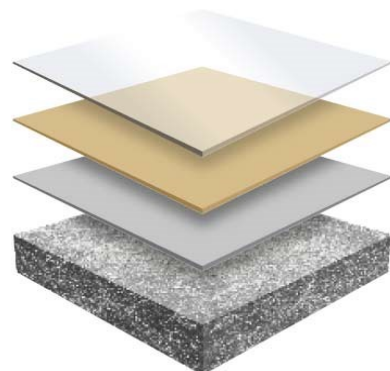
Provides impact & abrasion resistant necessary for high traffic areas like warehouses, manufacturing plants and airplane hangars. An optional polyaspartic or urethane topcoat ensures excellent wear characteristics with stain and chemical resistance.

Advantages

- Self-leveling
- Seamless high-build topcoat
- Low odor, low VOC
- Excellent adhesion & penetration
- Chemical and abrasion resistant
- Meets FDA requirements

Typical Uses

- Automotive
- Warehouses
- Manufacturing
- Mechanical rooms
- Educational
- Retail



2nd Topcoat (Optional): *Ultra-Guard 300 (clear polyaspartic)*
Ultra-Glaze 400 (clear urethane)

Topcoat: *Ultra-Shield 200 (clear epoxy) or Ultra-Shield 250 (colored epoxy)*

Basecoat: *Ultra-Shield 250 (colored epoxy)*

Primer: *Ultra-Prime 100 (clear water-based epoxy)*

Properly Prepared Concrete: *Ultra-Clean & Ultra-Etch*

Note: *For concrete floors with high moisture issues, use Ultra-Prime MVB as prime coat. Contact a Umaco representative for more details regarding proper surface preparation.*

SELF-LEVELING URETHANE CONCRETE SYSTEM

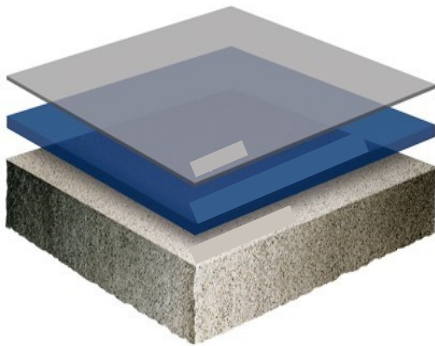
A seamless, three-part, self-leveling, urethane polymer concrete system which can withstand aggressive chemical attack, thermal shock resistance & high impact resistance. A natural quartz aggregate broadcast provides a slip-resistant finish. This system produces a stand alone, functional & high performance engineered floor.

Advantages

- Self-leveling
- Seamless high-build topcoat
- Low odor, low VOC
- Self-priming
- Superior impact & chemical resistance
- Meets FDA requirements

Typical Uses

- Chemical processing
- Food processing
- Manufacturing
- Mechanical rooms
- Industrial kitchens
- Wash areas



Topcoat: *Ultra-Guard 300 (colored polyaspartic)*

Slurry Coat: *Ultra-Crete 600 (1/8") or Ultra-Crete 650 (1/4") (broadcast quartz to rejection)*

Properly Prepared Concrete: *Ultra-Clean & Ultra-Etch*

Note: *For concrete floors with high moisture issues, use Ultra-Prime MVB as prime coat. Contact a Umaco representative for more details regarding proper surface preparation.*

METALLIC FLOOR SYSTEM

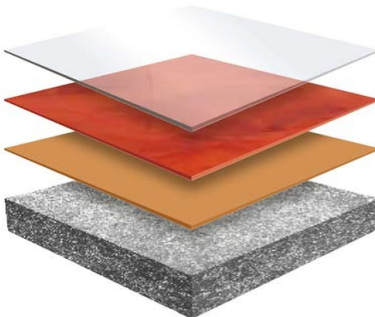
A decorative, seamless, resinous flooring system consisting of 100% solids epoxy & metallic color pigments. Creates a pearlescent & iridescent effect that mimics the natural look of stone & rock formations. An optional polyaspartic or urethane topcoat ensures excellent wear characteristics with stain & chemical resistance. Available in a wide range of colors. See color chart on page 14.

Advantages

- Self-leveling
- Seamless high-build topcoat
- Low odor, low VOC
- High-gloss, satin or matte finish
- Excellent adhesion & penetration
- Meets FDA requirements

Typical Uses

- Restaurants
- Retail
- Automotive
- Educational
- Lobbies
- Showrooms



Topcoat: *Ultra-Glaze 400 (clear urethane)*

Basecoat: *Metallic pigment blended with Ultra-Shield 200 (clear epoxy)*

Primer: *Ultra-Shield 250 (colored epoxy)*

Properly Prepared Concrete: *Ultra-Clean, Ultra-Etch & Ultra-Prime 100*

Note: *For concrete floors with high moisture issues, use Ultra-Prime MVB as prime coat. Contact a Umaco representative for more details regarding proper surface preparation.*

COLOR CHIP FLOOR SYSTEM

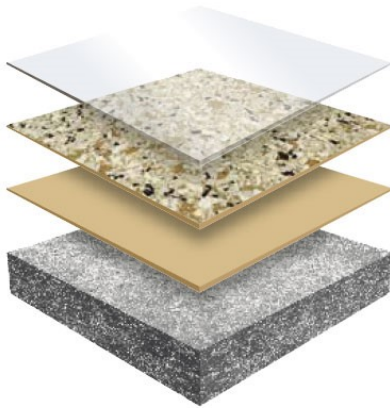
A decorative, seamless, resinous flooring system consisting of a 100% solids, epoxy (UV resistant) and colored chips. An optional polyaspartic or urethane topcoat ensures excellent wear characteristics with stain and chemical resistance. Available in a wide range of colors. See color chart on page 13.

Advantages

- Decorative
- Seamless
- Durable
- Chemical and abrasion resistant
- Wide range of colors available
- Meets FDA requirements

Typical Uses

- Retail
- Industrial kitchens
- Bathrooms
- Automotive
- Educational
- Lobbies



* **Topcoat (Optional):** *Umaco Ultra-Guard 300 (polyaspartic clear)*
Umaco Ultra-Glaze 400 (urethane clear)

Topcoat: *Ultra-Shield 200 (clear epoxy)*

Broadcast: *Colored chip to rejection*

Basecoat: *Ultra-Shield 250 (colored epoxy)*

Properly Prepared Concrete: *Ultra-Clean, Ultra-Etch & Ultra-Prime 100*

Note: *For concrete floors with high moisture issues, use Ultra-Prime MVB as prime coat. Contact a Umaco representative for more details regarding proper surface preparation.*

COLORED QUARTZ FLOOR SYSTEM

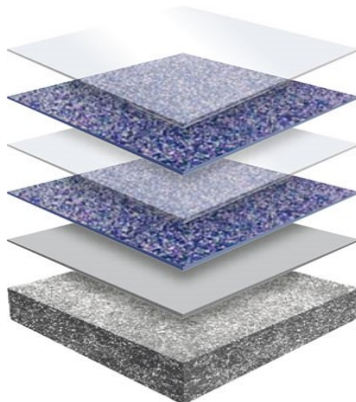
A decorative, seamless, resinous flooring system consisting of 100% solids epoxy & colored quartz. An optional polyaspartic or urethane topcoat ensures excellent wear characteristics with stain & chemical resistance. See color chart on page 13.

Advantages

- Decorative
- Seamless
- Durable
- Chemical & abrasion resistant
- Meets FDA requirements

Typical Uses

- Retail
- Industrial kitchens
- Bathrooms
- Automotive
- Lobbies



* **Topcoat (Optional):** *Umaco Ultra-Guard 300 (polyaspartic clear)*
Umaco Ultra-Glaze 400 (urethane clear)

Topcoat: *Ultra-Guard 200 (clear epoxy)*

Broadcast: *Colored quartz to rejection*

Basecoat: *Ultra-Shield 200 (clear epoxy)*

Broadcast: *Colored quartz to rejection*

Basecoat: *Ultra-Shield 200 (clear epoxy)*

Properly Prepared Concrete: *Ultra-Clean, Ultra-Etch & Ultra-Prime 100*

Note: *For concrete floors with high moisture issues, use Ultra-Prime MVB as prime coat. Contact a Umaco representative for more details regarding proper surface preparation.*

MOISTURE VAPOR BARRIER

ULTRA-PRIME MVB

A two-component, 100% solids, clear epoxy primer that helps control moisture vapor emissions in concrete slabs up to 20 pounds/24 hours/1000 ft². By blocking moisture, this primer prevents coatings from separating from the concrete substrate.

- Two-component
- 100% solids
- Low odor, low VOC
- Meets ASTM F3010
- Blocks vapor emissions up to 20 pounds/24 hours/1000 ft²)
- Can be used under floor coatings, wood flooring, carpeting and vinyl tile

PRIMERS

ULTRA-PRIME 100

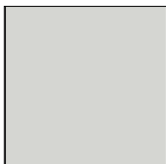
A two-component, clear, water-based, epoxy primer which exhibits excellent characteristics that rival solvent-based primers. This product is chemical and abrasion resistant and it also reduces pinholes, fish-eyes, craters and outgassing of topcoats.

- Two-component
- Low odor
- Easy to apply
- Excellent adhesion and penetration
- Chemical and abrasion resistant
- Reduces pinholes, fish-eyes, craters and outgassing of topcoats
- Available in Clear

ULTRA-PRIME 150

A two-component, colored, 100% solids epoxy primer. An ideal primer to use before applying high-solids topcoats over concrete. This product is chemical and abrasion resistant. Available in five standard colors listed below.

- Two-component
- 100% solids
- Low odor, low VOC
- Easy to apply
- Excellent adhesion and penetration
- Chemical and abrasion resistant.
- Available in 5 standard colors



Light Gray



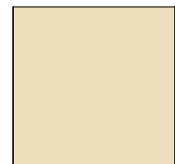
Medium Gray



Dark Gray



Tile Red



Beige

NON-SLIP ADDITIVE

ULTRA-GRIP

A lightweight, optically clear, micro-polymer additive used to enhance non-slip properties in coatings of all types. When mixed into the wet material, Ultra-Grip stays suspended in the material to allow for a uniform texture during coating applications. Available in Fine & Coarse.

- Slip-resistant additive
- Light-weight
- Will not discolor clear coats
- Increase scratch & abrasion resistance
- Increases durability
- Chemical resistant
- Available in Fine & Course

100% SOLIDS EPOXY

ULTRA-SHIELD 200

A clear, two-component, 100% solids, epoxy coating which provides a tough, high-gloss finish that combines excellent chemical resistance with superior adhesion. It is non-shrink, highly modified for better UV resistance and low odor. Can be used with metallic pigments.

- Two-component
- 100% solids
- Low odor, low VOC
- High-gloss
- Seamless high-build topcoat
- Excellent adhesion and penetration
- Chemical and abrasion resistant
- Available in Clear

ULTRA-SHIELD 250

A colored, two-component, 100% solids, epoxy coating which provides a tough, finish that combines excellent chemical and impact resistance. Should be top-coated with Ultra-Guard 300 (polyaspartic) or Ultra-Glaze 400 (urethane) for long term color stability.

- Two-component
- 100% solids
- Low odor, low VOC
- Easy to apply
- Excellent adhesion and penetration
- Chemical and impact resistant.
- Available in 5 standard colors



Light Gray



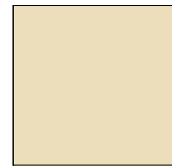
Medium Gray



Dark Gray



Tile Red



Beige

HIGH PERFORMANCE TOPCOATS

ULTRA-GUARD 300

A clear, quick-cure, two-component, high solids, aliphatic, polyaspartic polyurea which exhibits excellent retention, gloss and UV stability. Provides a tough, chemical & abrasion resistant finish. It's low odor makes it an ideal product for interior applications. Available in clear and colors.

- Aliphatic polyaspartic polyurea
- Two-component
- 90% solids
- Low odor, low VOC
- Excellent UV resistance
- Superior gloss retention
- Chemical and abrasion resistant
- Available in clear (high gloss) & colors

ULTRA-GUARD 350

A clear two-component, high solids, aliphatic, polyaspartic polyurea which exhibits excellent retention, gloss and UV stability. Ultra-Guard 300 provides a tough finish that combines excellent chemical and abrasion resistance. Sets slower than Ultra-Guard 300 allowing more working time.

- Aliphatic polyaspartic polyurea
- Two-component
- 77% solids
- Low VOC
- Excellent UV resistance
- Superior gloss retention
- Chemical and abrasion resistant
- Available in clear (high gloss)

ULTRA-GLAZE 400

A clear, two-component, waterborne, UV resistant, aliphatic polyurethane which cures to an inert, tough, impact, abrasion and chemical resistant finish coat. Excellent adhesion to concrete, cementitious mortars and epoxies. Available in Gloss, Satin and Matte.

- Aliphatic polyurethane
- Two-component
- High-solids
- Low odor, low VOC
- Excellent UV resistance
- Superior gloss retention
- Chemical and abrasion resistant
- Available in Clear Gloss, Satin & Matte

SEALERS

ULTRA-SEAL 500

A clear, single component, waterborne, UV stable, high performance, fast drying acrylic emulsion which may be used as a concrete and cementitious sealer or as a vinyl chip grout coat. Exhibits excellent adhesion and penetration when applied over new and existing concrete surfaces.

- Single component
- Low odor, low VOC
- Waterborne
- UV stable
- Low viscosity
- Excellent adhesion and penetration
- Designed for new & existing concrete
- Available in Clear (gloss)

ULTRA-SEAL 550

A colored, single component, acrylic epoxy, concrete sealer which provides excellent abrasion, impact, chemical, stain and mildew resistance. May be top-coated using Ultra-Guard 300 or Ultra-Glaze 400 for additional UV resistance. See color chart below.

- Single component acrylic epoxy
- Interior use only
- Low odor, low VOC
- Waterborne
- Abrasion and impact resistant
- Chemical and stain resistant
- Mildew resistant
- Available in 20 standard colors

COLOR-SEAL

A colored, single component, waterborne, acrylic, concrete sealer designed to be applied over concrete, which forms a durable film providing long lasting protection. Color-Seal is low odor, quick-drying, water resistant and provides excellent hot tire resistance and adhesion.

- Single component
- Interior and exterior use
- Low odor, low VOC
- Waterborne
- UV stable
- Excellent adhesion and penetration
- Hot tire resistance
- Available in 20 standard colors

Color Chart for Ultra-Seal 550 and Color-Seal



SELF-LEVELING URETHANE CEMENTS

ULTRA-CRETE 600 (1/8")

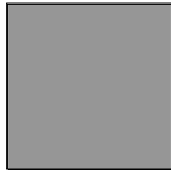
A three-part, seamless, self-leveling, urethane polymer concrete applied at 1/8" thickness. It can withstand aggressive chemical attack, thermal shock resistance and high impact resistance. Ultra-Crete 1/8" produces a stand alone, functional & high performance engineered floor.

- Three-component
- Self-priming for superior adhesion
- Superior impact resistance
- Wide temperature service range from -50°F to 200°F
- Blocks vapor emissions up to 15 pounds/24 hours/1000 ft²)
- Available in Tan, Gray & Tile Red

ULTRA-CRETE 650 (1/4")

A three-part, seamless, self-leveling, urethane polymer concrete applied at 1/4" thickness. It can withstand aggressive chemical attack, thermal shock resistance and high impact resistance. Ultra-Crete 1/4" produces a stand alone, functional & high performance engineered floor.

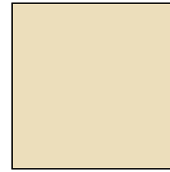
- Three-component
- Self-priming for superior adhesion
- Superior impact resistance
- Wide temperature service range from -50°F to 200°F
- Blocks vapor emissions up to 15 pounds/24 hours/1000 ft²)
- Available in Gray, Tile Red & Tan



Gray



Tile Red



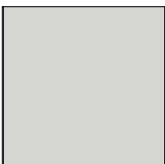
Tan

SELF-LEVELING EPOXY FLOOR SYSTEM

ULTRA-FLOW

A three-part, self-leveling, epoxy polymer, leveling material which may be applied at any thickness. Ultra-Flow cures to a tough, durable and high impact resistant surface. For better abrasion resistance, topcoat with Ultra-Shield 200, Ultra-Guard 300 or Ultra-Glaze 400.

- Three-component
- Self-priming for superior adhesion
- Superior impact resistance
- Shallow, partial & full depth leveling
- Resurfaces old worn concrete
- May be applied at any thickness
- Available in clear or in 5 standard colors



Light Gray



Medium Gray



Dark Gray



Tile Red



Beige

FLEXIBLE POLYURETHANE MEMBRANE

ULTRA-FLEX 700

A two-component, fast-curing, flexible, polyurethane, elastomeric, waterproof membrane applied over concrete in a wide range of temperatures. May be applied at any thickness filling deep joints, cracks & imperfections in a single application. Top-coat with Ultra-Flex 550.

- Two-component
- Flexible waterproof protection
- Can be applied at any thickness
- Mechanical rooms, balconies, plaza decks & parking decks
- Should be top-coated with Ultra-Flex 550 for UV resistance
- Apply in temperatures as low as 20°F

ULTRA-FLEX 750

A two-component, UV stable, fast-setting, rapid-curing, solvent-free, high-solids, hybrid, aliphatic, polyurea elastomeric membrane applied to interior or exterior concrete, plywood and metal surfaces. An excellent topcoat for Ultra-Flex 500

- Two-component
- UV stable
- Flexible waterproof protection
- Mechanical rooms, balconies, plaza decks & parking decks
- Thermal stability & chemical resistance
- Apply in temperatures as low as 20°F
- Excellent top-coat for Ultra-Flex 500

CONCRETE POLISHING

ULTRA-POLISH 800 (DENSIFIER)

A one-component, extra-strength, water-based & lithium based solution designed to densify cement & concrete substrates. It chemically hardens & fortifies the substrate making it more abrasion resistant while protecting the surface from wear, moisture & efflorescence.

- Increases durability & abrasion resistance
- Improves weathering & resistance to freeze-thaw cycles
- Densifies & fortifies concrete
- Seals against moisture damage
- Reduces dusting
- Breathable

ULTRA-POLISH 825 (CONDITIONER)

A one-component, water-based, self-cross linking, hydrophobic, organic polymer & silane/siloxane used in the grind & polish process as a surface conditioner & stain guard. To be applied before the final polishing step to increase long term performance, gloss & stain resistance.

- Increases durability, stain & abrasion resistance
- Improves weathering
- Densifies & fortifies concrete
- Reduces dusting
- Reduces water absorption into the substrate
- Excellent adhesion and penetration

ULTRA-POLISH 850 (GROUT COAT)

A two-component, 100% solids, epoxy designed to be used as a grout coat which strengthens weak concrete prior to the grind & polish process. Ultra-Polish 850 improves concrete performance. Accelerator available which allows for a quicker start time for the grind & polish process to begin.

- Two-component
- 100% solids
- Grout coat used prior to the grind & polish process
- Strengthens weak concrete
- Improves concrete performance
- Excellent adhesion and penetration
- Accelerator available

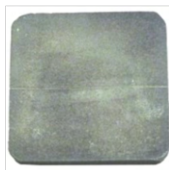
PAVER-SAVER PLUS



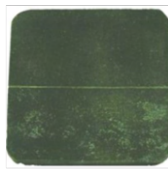
Paver-Saver Plus is a premium, semi-transparent, decorative, concrete stain which is water submersible, alkali and UV light resistant. Paver-Saver Plus not only decorates but it also protects concrete from the damaging effects of water, oil and stains. Paver-Saver Plus may be top-coated using Umaco Ultra-Guard 300 (polyaspartic) or Umaco Ultra-Glaze 400 (urethane) if additional chemical, abrasion and UV resistance is required.



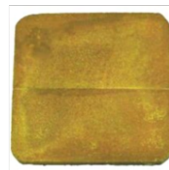
Antique Gray



Gray



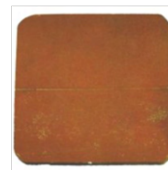
Olive Green



Sandstone



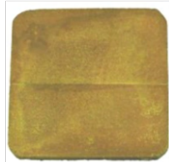
Pottery



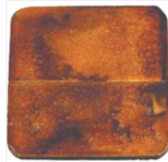
Terra Cotta



Mars Red



Light Adobe



Dark Adobe



Dark Brown

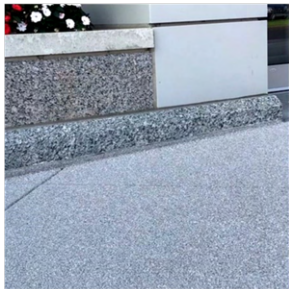


Dark Chocolate



Desert Sand

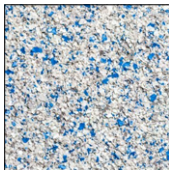
GRANITELITE COLOR GRANULES



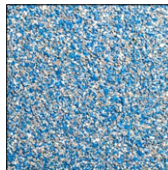
GraniteLite™ Color Granules are a proprietary blend of resin materials and natural minerals which provides a durable, long lasting, easy to maintain and aesthetically pleasing finish. GraniteLite™ Color Granules are a perfect blend of beauty and function. The textured design features a realistic granite finish which looks and feels like real granite but at a fraction of the weight and cost. Designed to be broadcast then sealed.



Crushed Marble



Cloudy Sky



Ocean Wave



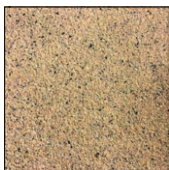
Light Granite



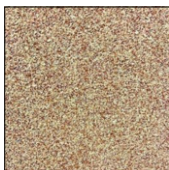
Granite



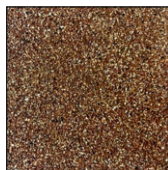
Sandstone



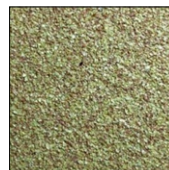
Desert Sand



Adobe



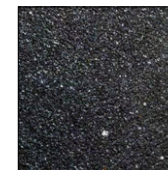
Vintage Brick



Light Green



Dark Green

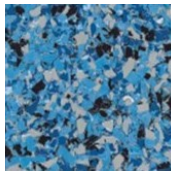


Midnight

COLOR FLAKES BLENDS



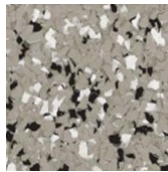
Color flakes are specially formulated paint aggregates used to enhance the aesthetic qualities of seamless, resin-based chip/flake flooring systems. This unique product is random in shape, sized within a standardized range and custom blended to match any décor. Color flakes allow complete customization to commercial, residential and industrial floors with an endless range color-styles, texture, size and blending options.



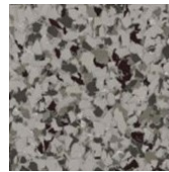
BL1000



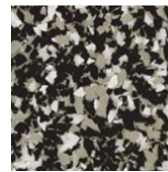
GN1000



GY1001



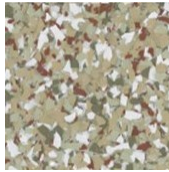
GY1002



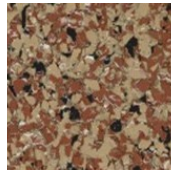
GY1003



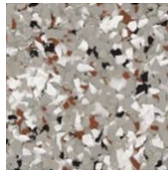
GY1004



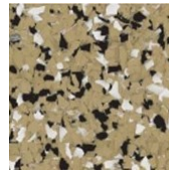
RD1001



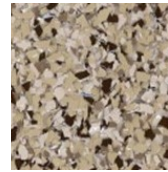
RD1002



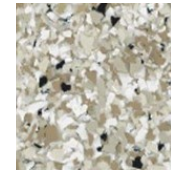
RD1003



TN1001



TN1002



TN1005

COLOR QUARTZ BLENDS



Color quartz provides an aesthetically pleasing surface which is able to withstand harsh chemical exposure as well as abrasive high-traffic areas. Color quartz also provides the versatility to custom design a high performance resinous flooring system that will withstand the most severe environments. The sheer hardness of the quartz will enhance both impact and slip resistance, making it the optimal solution for the most extreme surfaces.



Black Granite



Blue Granite



Ice



Sienna



Caramel



Sandalwood



Aqua



Southern Moss



Sagebrush



Coffee

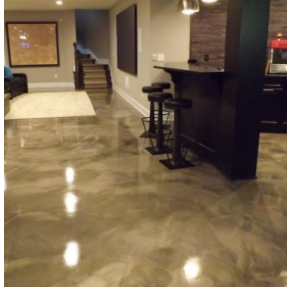


Sahara



Driftwood

METALLIC COLOR PIGMENTS



Metallic Color Pigments are special effect pigments composed of mica nano-particles coated with various organic and inorganic pigments to create pearlescent and iridescent effects that mimic the natural look of stone and rock formations. These unique pigments are designed to be field blended with a 100% solids clear epoxy binder. When the metallic particles are mixed with epoxy they give the coating a shine that reflects light and creates an eye-catching dramatic color.



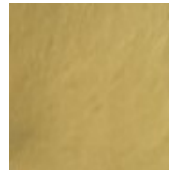
Guava



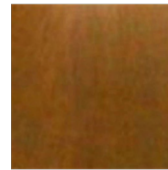
Rum



Coral



Sandbar



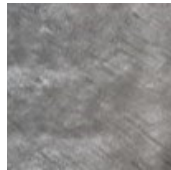
Sandal



Bamboo



Whale



Manatee



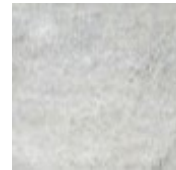
Dolphin



Azure



Americana



Pearl

COLOR MICA-FLAKES



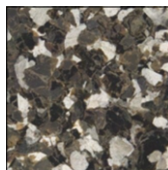
MICA makes resinous flooring glisten with natural crystalline beauty. These unique flakes are derived from a group of sheet silicate minerals. Through a highly technical manufacturing process, the distinctive hexagonal atom arrangement of the mica minerals is separated into sheet-like pieces, separated into natural color groups and broken down into standardized flakes sizes. These unique flakes provide a natural metallic luster that cannot be achieved with other engineered minerals.



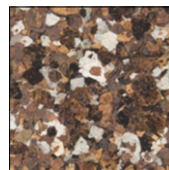
MC-5001



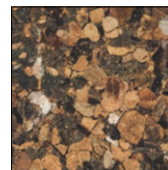
MC-5002



MC-5003



MC-5004



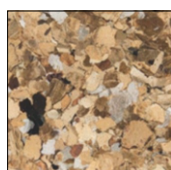
MC-5005



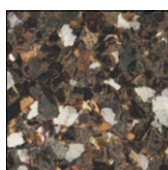
MC-5006



MC-5009



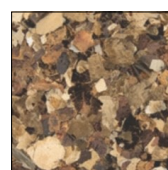
MC-5012



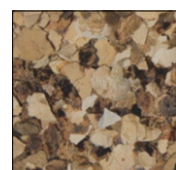
MC-5013



MC-5015



MC-5016



MC-5017

ETCHING & CLEANING SOLUTIONS



ULTRA-CLEAN

An environmentally safe, 100% biodegradable solution used to clean concrete. Ultra-Clean safely & effectively removes dirt, oil, grease & grime. Helps clean & prepare concrete surfaces prior to the application of resinous floor coatings. Neutralizing not required



ULTRA-ETCH

An environmentally safe, 100% biodegradable, non-fuming solution used to lightly etch non-porous concrete. Ultra-Etch takes the place of harmful & hazardous acids yet provides excellent results. Helps prepare concrete surfaces prior to the application of resinous floor coatings. Neutralizing not required.

PATCHING & RESURFACING



UNIVERSAL 1023

A single-component, cement-based, polymer-modified, high-density, patching, resurfacing and underlayment material for applications from a feather-edge up to 6". Helps resurface and repair concrete surfaces (if needed) prior to the application of resinous floor coatings. Available in gray and white.



SELF-LEVELER 4000

A single-component, cement-based, polymer-modified, self-leveling, floor resurfacer which can be poured or pumped. Self-Leveler 4000 may be applied from a feather-edge up to 2" in a single pour. Helps resurface and repair concrete surfaces (if needed) prior to application of resinous floor coatings.



FEATHER-EDGE

A fast-setting, polymer-modified, cement-based, patching compound which provides a smooth, true feather-edge finish when applied by trowel over a variety of interior substrates prior to the installation of floor coverings such as ceramic tile, VCT, sheet vinyl & carpeting.



60 Rear Newhall Street
Lowell, MA 01852
Toll Free: 800-442-5535
Phone: 978-453-8881
www.umaco.com

Brochure 2021, Printed in the USA